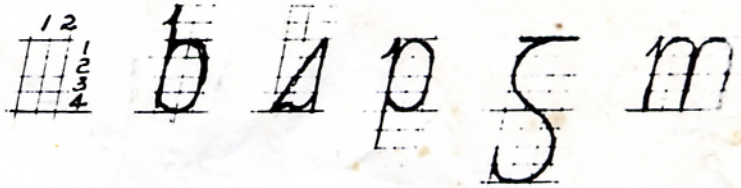


This system can be used to write a cursive script.

I. Fundamentals

Basic space is 4 units
high, 2 units wide
("g" is 3 units wide,
"m" is 4 units wide)



II. Individual letters - practice these first. Capitals are same shape, but are larger.

n m h r - ll - oc b p o e s t - g f d u

III. Two-letter groups - practice these, then use as a reference when writing entire words.

ab ac ad ae af ag ah ai am ao as at au
ba bo be bf bg bh bi bs bt bu
ca cb cd cg cs ct
da db dc do de df dg dh di dm ds du
ea eb eo ee ef es et
fa fb fo fs ft
ga gb gc go gg gs gt
ha hb ho hg hs ht
ia ib io is it - la (See "a") - ma (See "a")
na (See "a") - oa (See "b")
pa po pe pg po ps pt - ra (See "a")
sa sb sc so se sg ss st
ta to tc t'o ts tt - ua (See "a")

IV. Examples

Deirim beannacht agus céad lóm;
seanchleachta; ourúinach; Éire; Gaillimh